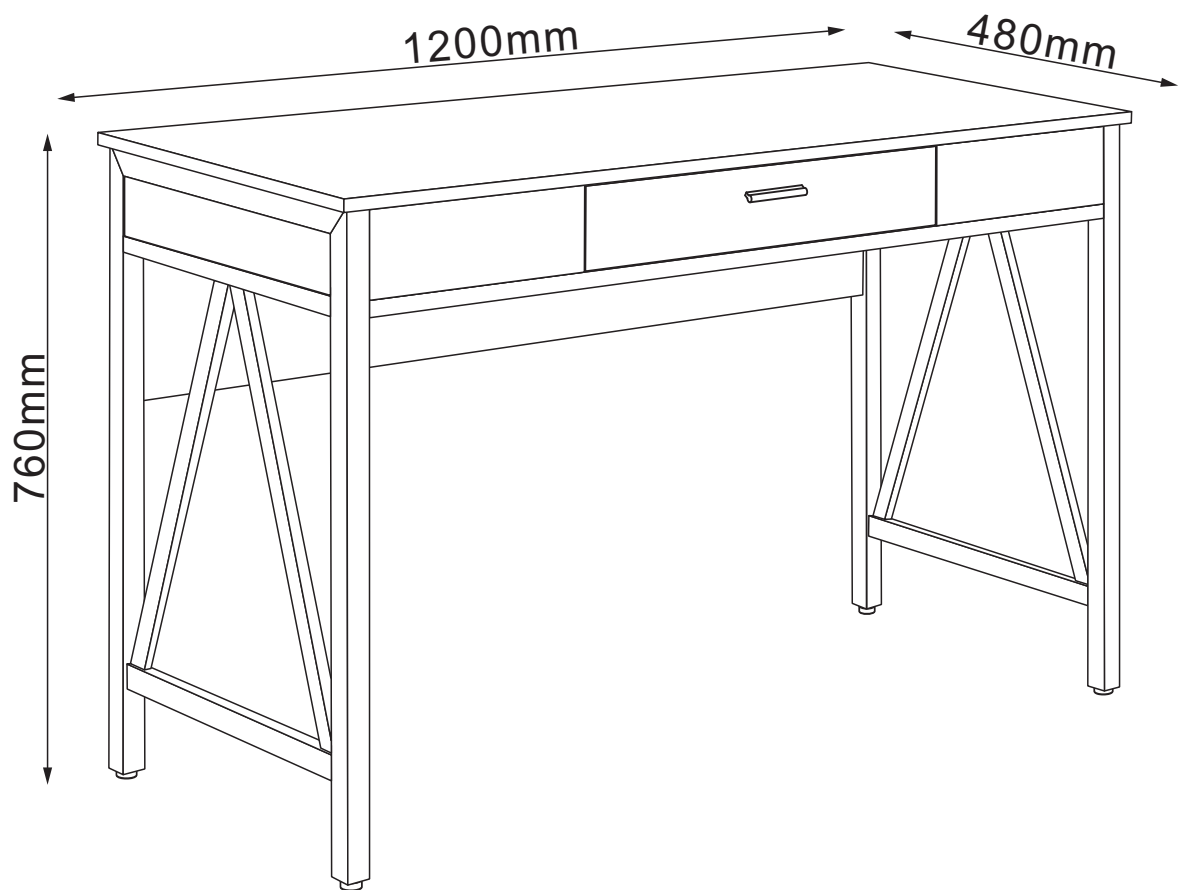


ASSEMBLY INSTRUCTION

ADELAIDE

DESK

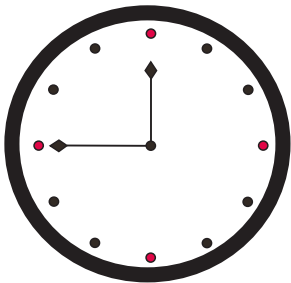
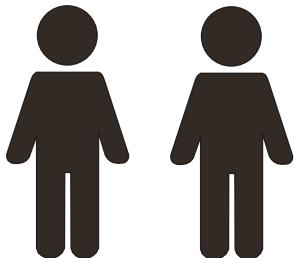
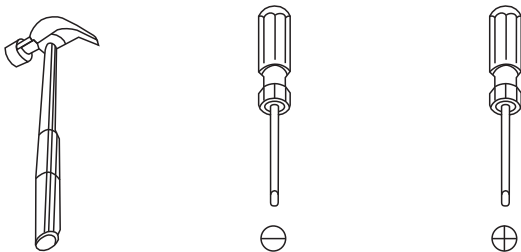
ITEM CODE 70822 85545



PRE-ASSEMBLY PREPARATION

Before you start:

1. Choose a clean, level, spacious assembly area. Avoid hard surfaces that may damage the product
2. Take care when lifting. Product should be assembled as near as possible to the point of use
3. Ensure that you have all required contents for complete assembly
4. Always read the assembly instructions carefully before beginning assembly.
5. Keep all hardware parts and packaging out of reach of small children.
6. Do not over tighten the screws and bolts as this may damage the threads

		
Allow 45min	For 2 person	Additional tools required



WARNING



Children have died from furniture tipover.

- ALWAYS secure it with an anchor device.
- NEVER allow children to stand, climb or hang on drawers, doors, or shelves.
- NEVER open more than one drawer at a time.
- Place heavy items down low

NEVER put a TV on this furniture 

This is a permanent label. Do not remove!

SAFETY BRACKETS INSTRUCTIONS

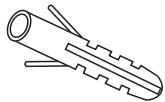
This furniture poses a tipping risk and as such must be secured to a wall using the provided tipping kit.

1. Attach one Mounting Plate to the wall with the Large Screws. Make sure to attach the Mounting Plate into a stud. If mounting into brick or masonry you will need to acquire wall anchors. Please enquire with your local hardware supplier for appropriate fixings.
2. Attach the second Mounting Plate to the furniture frame with the Short Screws.
3. Move the furniture to its final position. Thread a Wall Strap through the both Mounting Plates and tighten until snug. Do not over tighten.
4. Make sure that the Mounting Plates are firmly attached to the wall and furniture and that the Wall Strap is snug.

HARDWARE



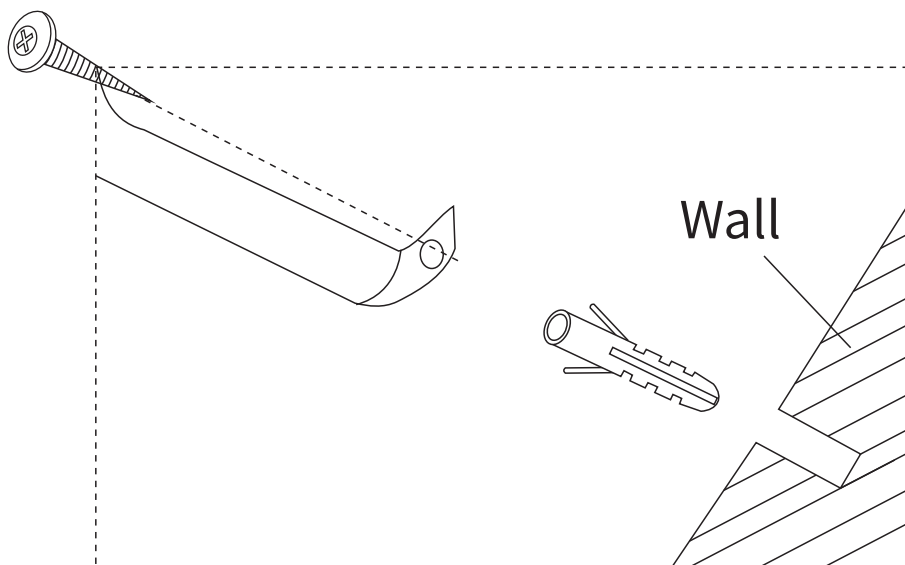
2pcs



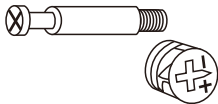
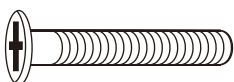
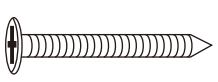
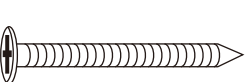
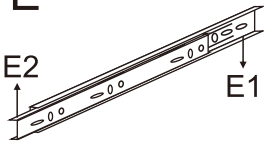
2pcs




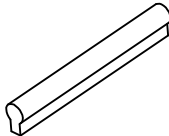
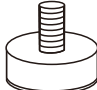



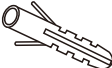

2pcs



PARTS LIST

A  22pcs	B  M6X40 mm 6pcs	C  ST5X50mm 10pcs	D  ST5X60mm 4pcs	E  E2 E1 2pcs
--	---	--	--	---

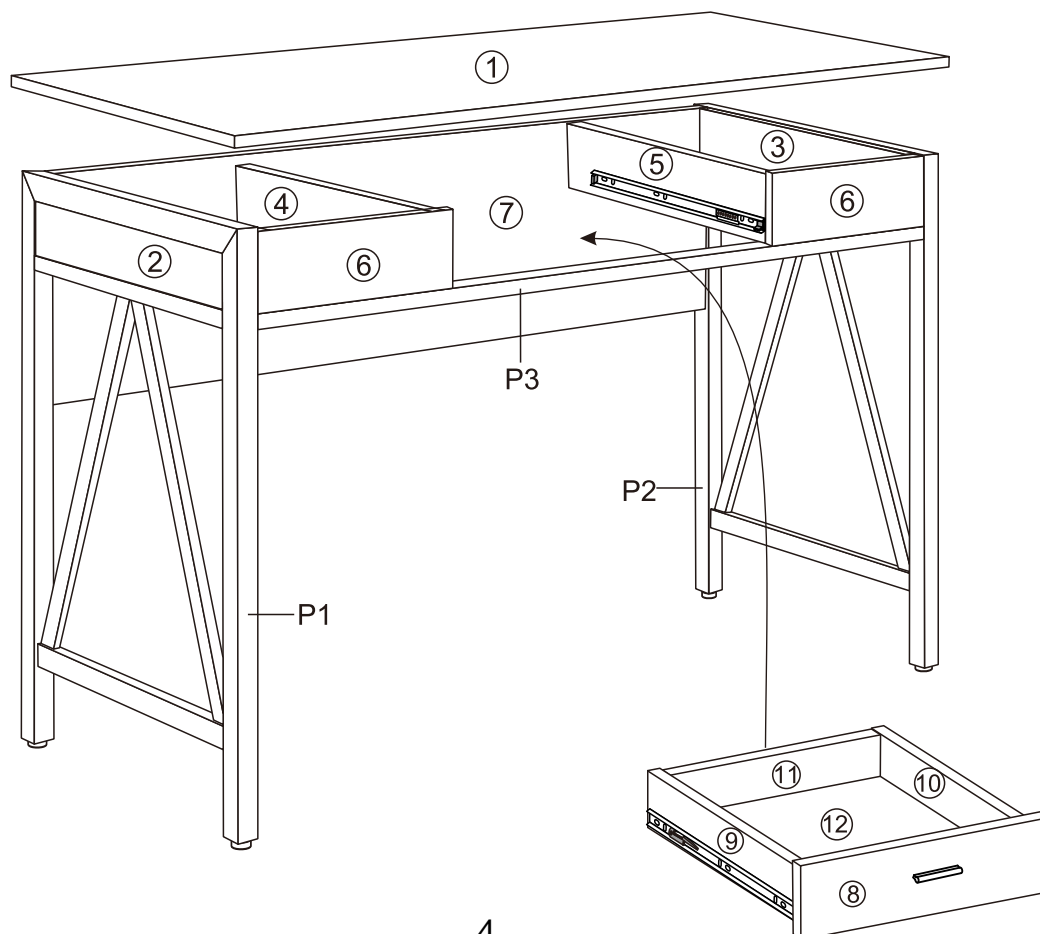
F  ST3.5X12mm 8pcs	G  8x30mm 8pcs	H  M4X18mm 2pcs	I  1pc	J  4pcs
---	---	--	---	---

K  ST4X25mm 2pcs	L  2pcs	M  2pcs
---	---	---

1	Panel
2	Left side panel
3	Right side panel
4	Left neutral panel
5	Right neutral panel

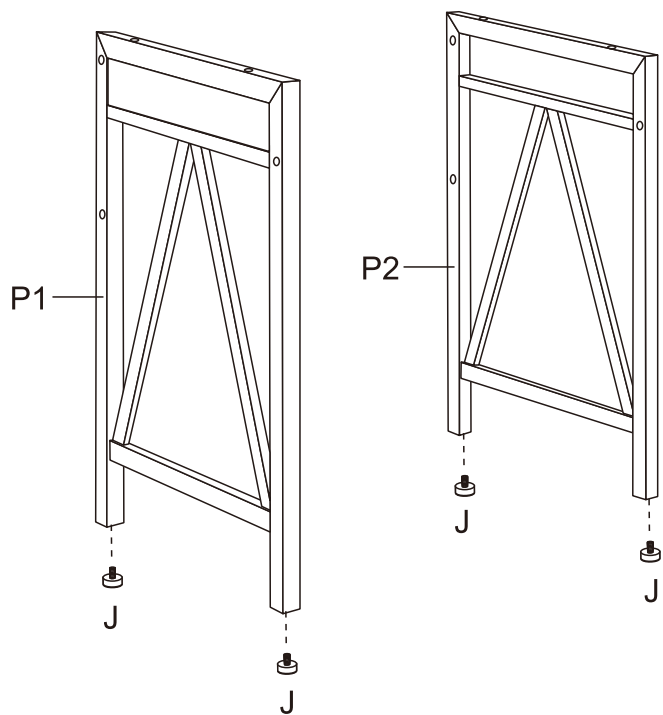
6	Front baffle panel
7	Back connection panel
8	Drawer panel
9	Left drawer panel
10	Right drawer panel

11	Back drawer panel
12	Lower drawer panel
P1	Left main frame
P2	Right main frame
P3	Connection tube



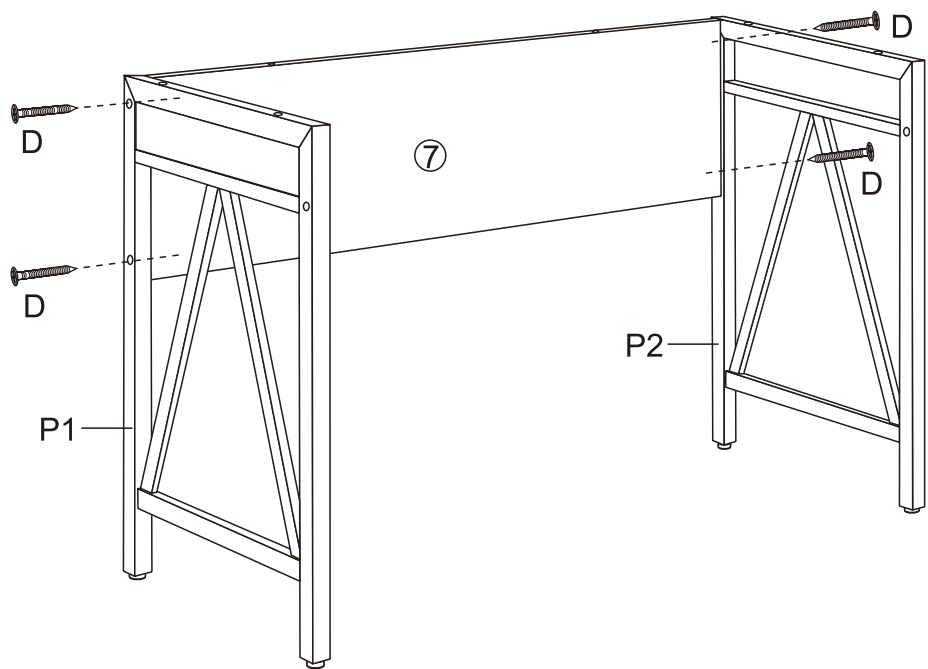
STEP 1:

Install the fitting J at the bottom of P1 and P2.



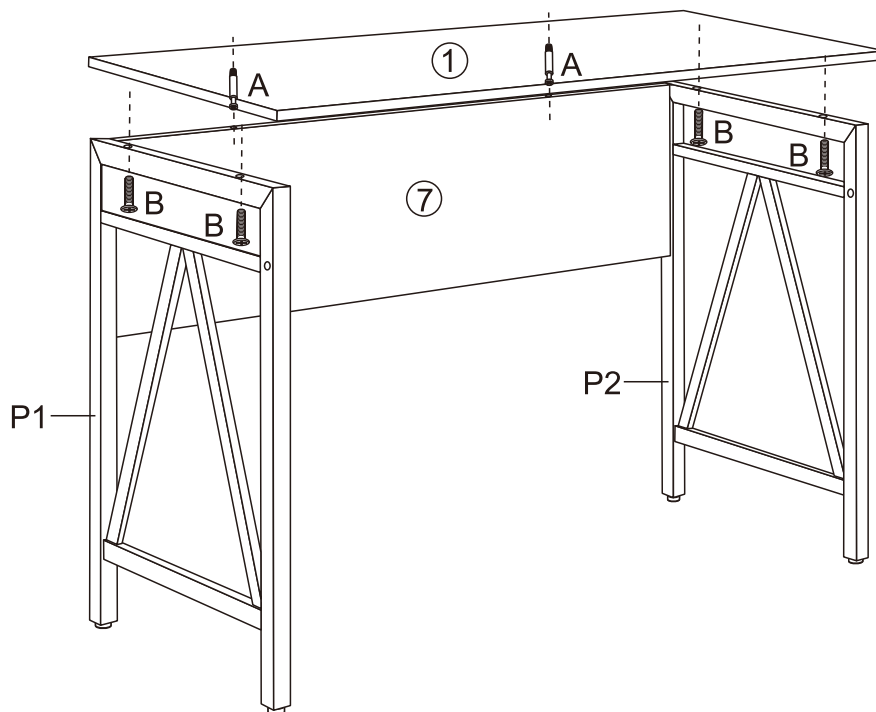
STEP 2:

Fix P1 and P2 on both ends of Panel 7 with fitting D.



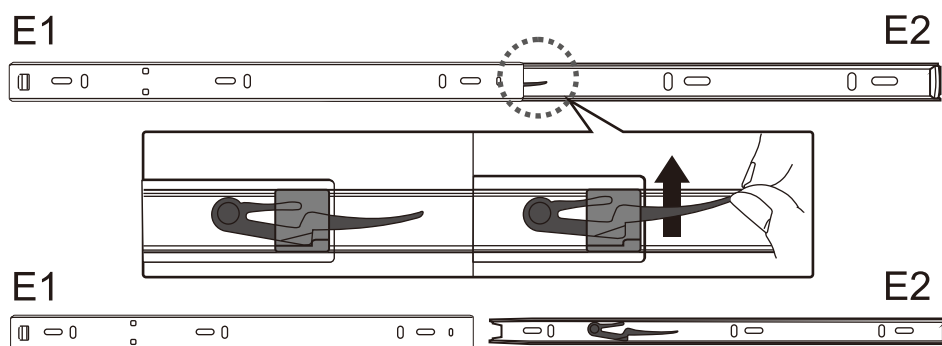
STEP 3:

1. Fix Panel 1 on Panel 7 with fitting A.
2. Fix Panel 1 on the corresponding orifice positions P1 and P2 with fitting B.



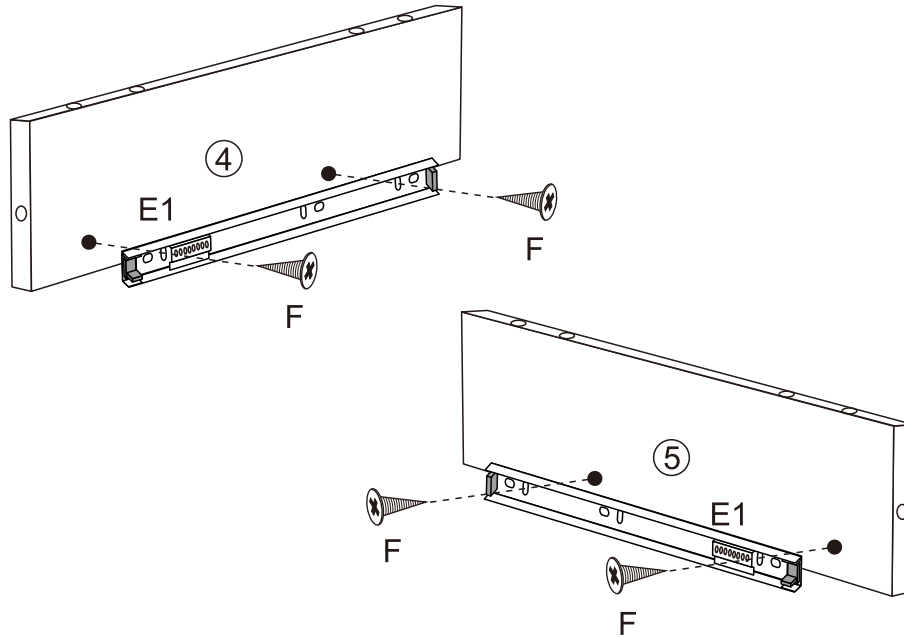
STEP 4:

Split fitting E: Press the plastic part inside the E2 part by hand and pull out the E2 horizontally.



STEP 5:

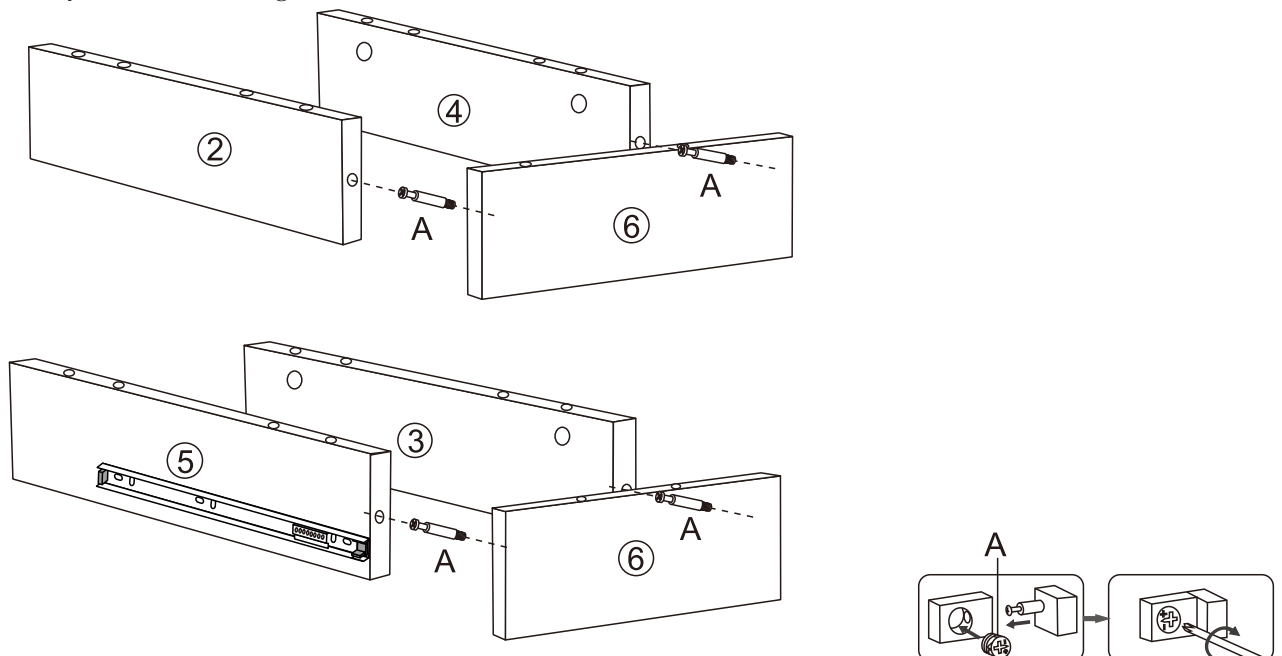
Fix E1 on the drawing holes of Panel 4 and Panel 5 respectively with fitting F.



STEP 6:

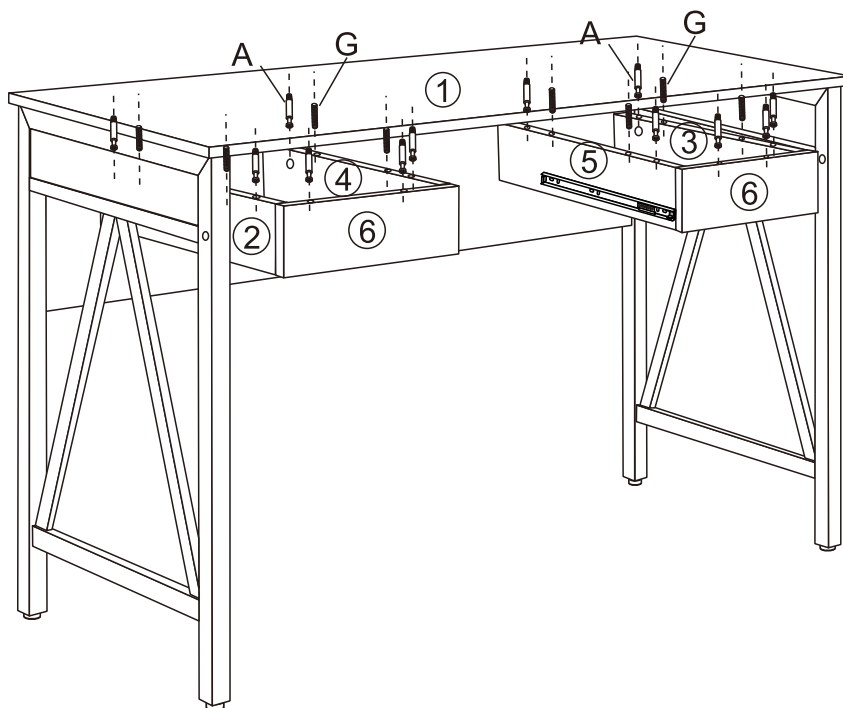
1. Fix the Panel 6 on the corresponding hole of Panel 2 and Panel 4 respectively with fitting A.

2. Fix the Panel 6 on the corresponding hole of Panel 3 and Panel 5 respectively with fitting A.



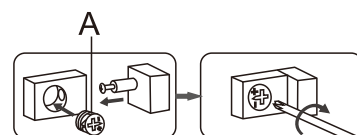
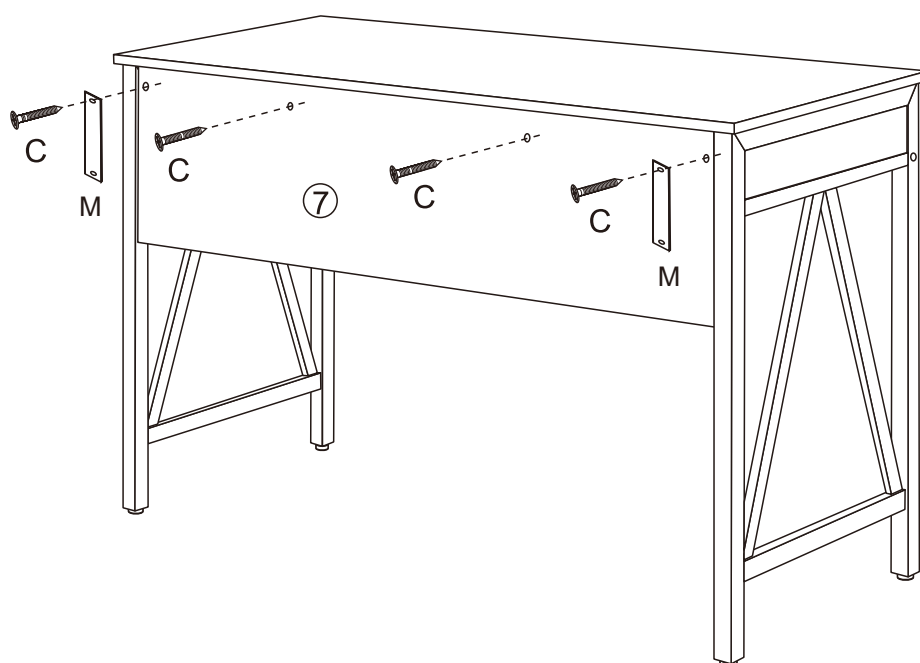
STEP 7:

1. Fix the Panel 2/4/6 assembly on the left side of Panel 1 with fitting A and G.
2. Fix the Panel 3/5/6 assembly on the right side of Panel 1 with fitting A and G.



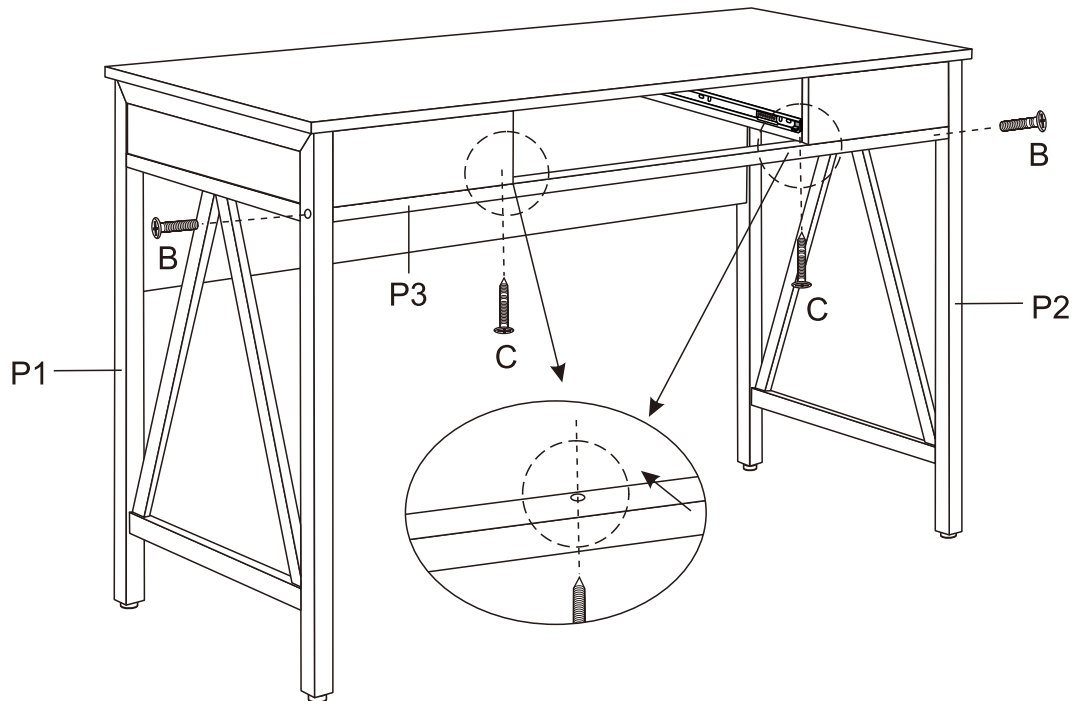
STEP 8:

Fix Panel 2/3/4/5 on Panel 7 with fitting C.
After passing through fitting M, fitting C on both sides are locked into the panel.



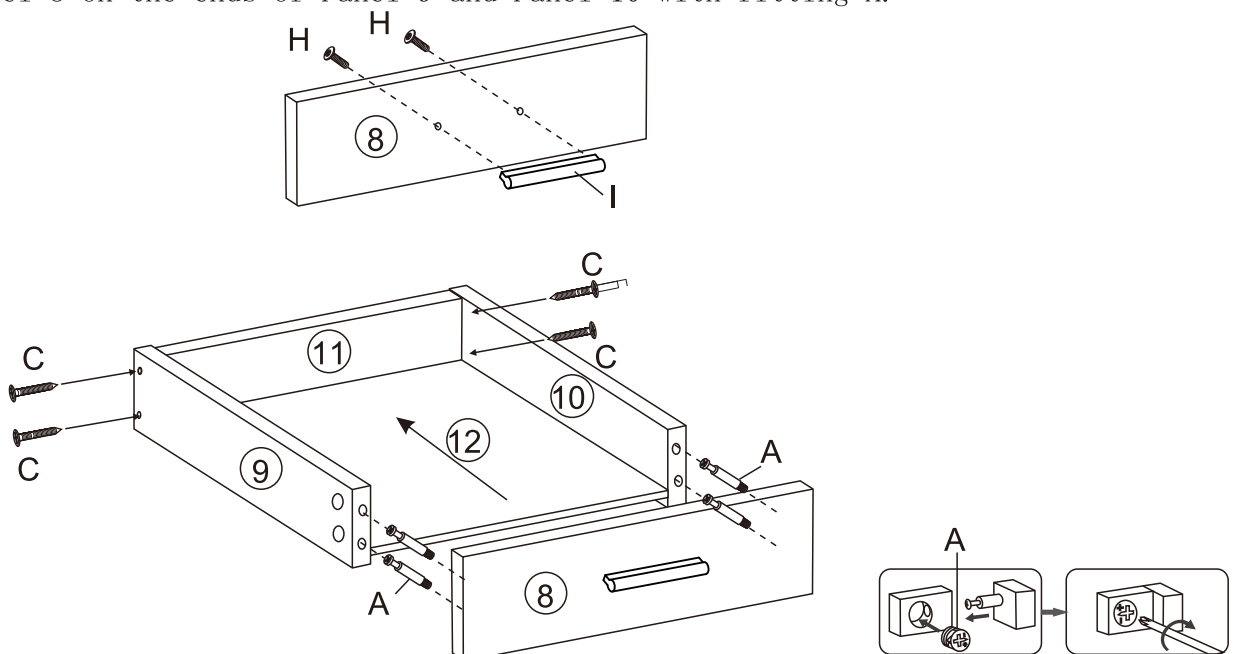
STEP 9:

1. Secure both ends of P3 to the corresponding holes P1 and P2 using fitting B.
2. Connect P3 and panel 6 with fitting C.



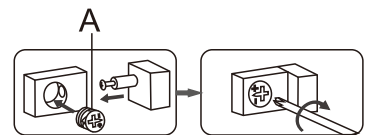
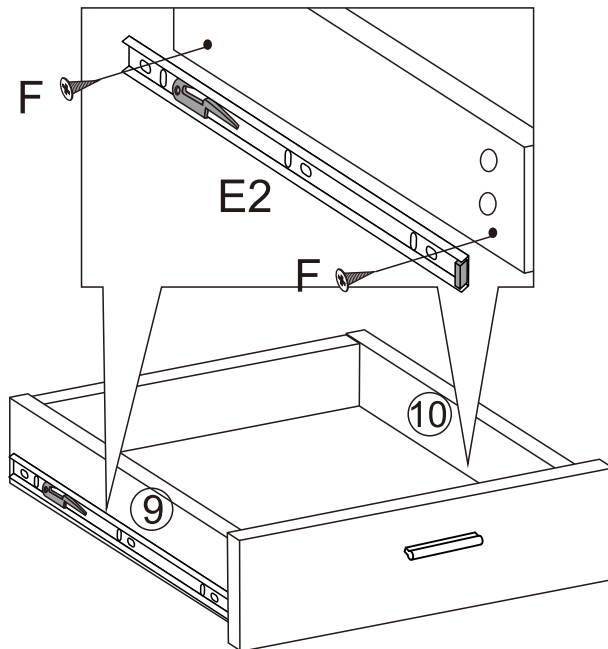
STEP 10:

1. Fix I at the corresponding hole of Panel 8 with fitting H.
2. Fix Panel 9 and Panel 10 on both ends of Panel 11 at corresponding orifice positions with fitting C.
3. Panel 12 is pushed in along the slots of Panel 9 and Panel 10.
4. Fix Panel 8 on the ends of Panel 9 and Panel 10 with fitting A.



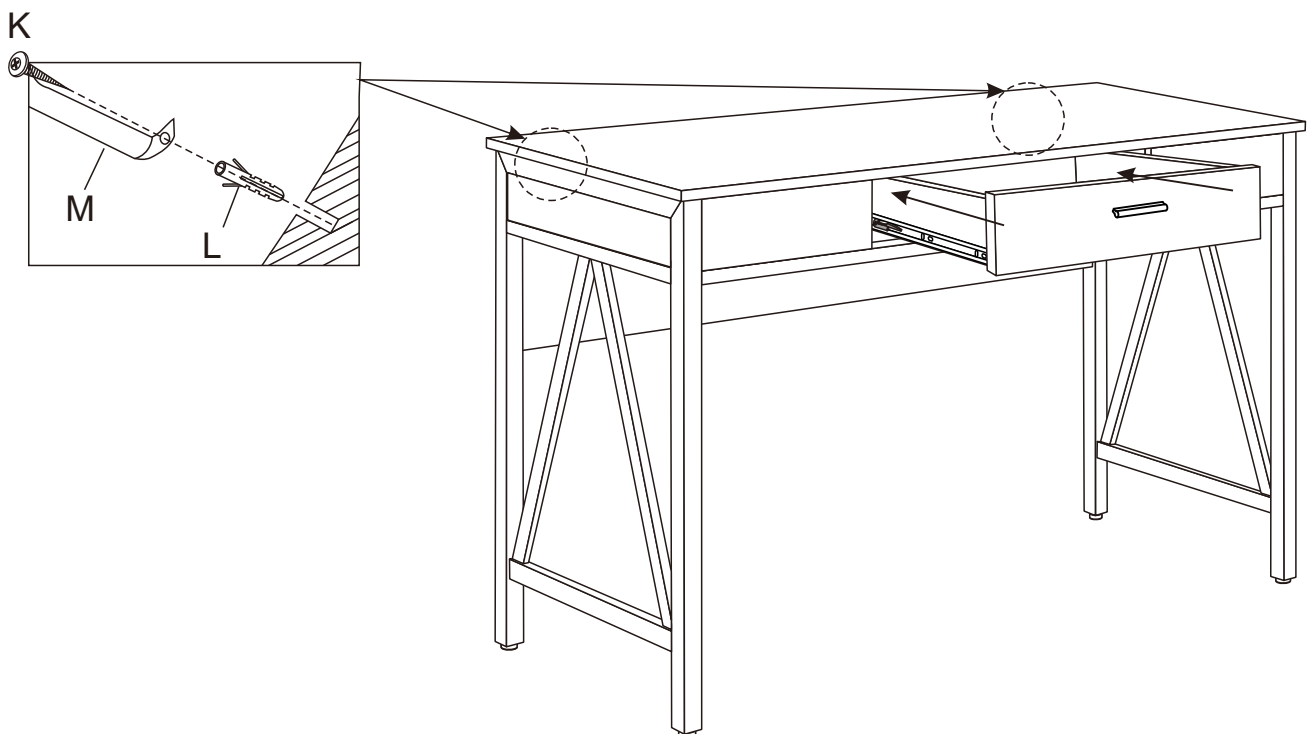
STEP 11:

The E2 shall be fixed on the drawing holes of Panel 9 and Panel 10 respectively by fitting F.



STEP 12:

Place the assembled drawer assembly horizontally into the corresponding position of the table.



STEP 13:

Finished assembly;



To protect your furniture, we suggest the following:

- Avoid placing your furniture in direct sunlight.
- Do not place furniture directly under windows.
- Do not place sharp materials (knife, fork, etc.) directly onto your furniture as sharp material may scrape and damage the finish.
- Do not place material with high temperature directly onto the surface of your furniture.
- Clean up spills quickly. Water left over a prolonged period of time may cause damage. Alcohol, perfume, nail polishes, aftershave and some medication may cause severe finish damage if not cleaned immediately.
- Use a clean, soft, dry, lint free absorbent cloth to clean your furniture. Do not use any detergent as they may contain ingredients that may react and damage the finish.

NOTE: If the above care advise is not adhered to your product warranty may become void